



**SEMANA DEL ATLANTICO 2013 MEETING INTERNACIONAL CIUDAD DE VIGO
XXXVIII TROFEO MARTÍN BARREIRO
OPTIMIST Categories A-B-C**

1 - 3 November, 2013 - Real Club Náutico de Vigo, Galicia, Spain.

SAILING INSTRUCTIONS (SI)

ORGANISING AUTHORITY

The 2013 SEMANA DEL ATLÁNTICO, XXXVIII TROFEO MARTÍN BARREIRO, Meeting Internacional CIUDAD DE VIGO is organised by the Real Club Náutico de Vigo in conjunction with the Real Federación Española de Vela and the Federación Gallega de Vela.

1. RULES

- 1.1 The Regatta will be governed by the 'rules' as defined in The Racing Rules of Sailing (RRS).
- 1.2 No national authority prescriptions will apply.
- 1.3 Spanish shall be the official language for the Championship. However, if there is a conflict between languages about documents originally written in English, the English text will take precedence.

2. NOTICES TO COMPETITORS

All notices to competitors will be posted on the official notice board located in the Race Office.
(See attachment 1)

3. CHANGES TO THE SAILING INSTRUCTIONS

Any change to the SI will be posted before 0900 hours on the day it will take effect, except that any change to the schedule of races will be posted by 2000 hours on the day before it will take effect.

4. SIGNALS MADE ASHORE

- 4.1 Signals made ashore will be displayed from the official flagpole located in the upstairs floor of the sailing school building. (See attachment 1). When a signal is displayed over a division flag it applies to that division only.
- 4.2 Flag D with a sound signal means: 'the warning signal will be made not less than 30 minutes after flag D is displayed.' Boats shall not leave their berthing places until this signal is made.
- 4.3 Flag B displayed means that instruction 19.3 applies.

5. SIGNALS MADE AT SEA

- 5.1 Besides the signals foreseen in RRS "Race Signals", the following special signal will be made:
(a) When the Red Cross flag is displayed on the Race Committee vessel it means: "Coach and other team support boats must cooperate with the Organising Committee in safety tasks."

6. FORMAT OF RACING

- 6.1 Categories A-B:
 - (a) Divisions: The fleet will be divided into six divisions for the whole duration of the championship.
 - (b) Identification of divisions: All boats shall display a coloured ribbon (corresponding to the colour of each division flag permanently fixed and free to fly from the top of the sprit. These ribbons will be provided by the Race Office and shall not be shortened.
 - (c) Allocation to divisions: Boats will be assigned to different divisions at the criteria of the Race Committee. This criteria will be based in the world ranking list, national rankings and other relevant information. The decision of the Race Committee under this SI will be final and will not be grounds for redress. This changes rule 62.1(a):
- 6.2 Category C:
Fleet races will be sailed.

7. SCHEDULE OF RACES

7.1 Programme:

	A&B	C
October, 31	Official Arrival Day. 10:00 -19:00 Sign in at Registration Office. 19:15 Coaches Meeting (mandatory)	
November, 1	11.00 Races.	11:30 Races.
November, 2	10.00 Races.	10:30 Races.
November, 3	10.00 Races. 17:00- Price Giving.	10:30 Races

7.2

Number of Races:

(a)The total number of races scheduled is 9 races, with 1 to 3 races per day. Attachment 4 shows the starting schedule.

(b)One extra race per day may be sailed, provided that no division becomes more than one race ahead of schedule.

7.3 The scheduled time of the warning signal for the first race on 1st November is 1100 hours for categories A –B and 11:30 for category “C”.

7.4 To alert boats that a race or sequence of races will begin soon, the orange flag defining the starboard end of the starting line will be displayed, with one sound signal, for at least four minutes before a warning signal is displayed.

7.5 On the last day of regatta no warning signal will be made after 1500 hours.

8. CLASS FLAGS

8.1 For each start of the **category A & B**, the *Class Flag* (RRS 26) will be the two flags of the divisions to be started, with colours according to the following table:

Division	Flag
1	Blue
2	Green
3	Red
4	Yellow
5	White
6	Pink

8.2 For the **Category C** the Class Flag will be the “G” I.C.S.

9. RACING AREA

Attachment 2 shows the location of the racing area.

10. THE COURSE

The diagram in Attachment 3 shows the course for categories A and B, including the approximate angles between legs, the order in which marks are to be passed, and the side on which each mark is to be left.

The diagram in Attachment 4 shows the course for category C, including the approximate angles between legs, the order in which marks are to be passed, and the side on which each mark is to be left.

11. MARKS

11.1 **Categories A-B:** Marks 1, 2, 3S and 3P will be red inflatable cylindrical buoys.

11.1.1The starting marks will be Race Committee boat on the starboard end of the line and yellow inflatable cylindrical buoy at the port end.

11.1.2The finishing marks will be Race Committee boat and red pin end buoy.

11.2 **Category C:** Marks 1,2 will be white inflatable cylindrical buoys.

11.2.1 The starting marks will be Race Committee boat at the starboard end and a yellow inflatable troncoconical buoy at the port end.

11.2.2 The finishing marks will be Race Committee boat and on starboard a red cylindrical inflatable buoy.

12. THE START

12.1 Attachment 5 shows the scheduled times and the order in which starts will be made.

12.2 The starting line will be between staffs displaying orange flag on the starboard end of the line and the yellow inflatable cylindrical mark (troncoconical for Category C) on the port end of the line.

12.3 Individual recalls will be made in accordance with rule 29.1 except that flag X will be displayed for up to 2 minutes. This changes rule 29.1.

12.4 Once the starting sequence for the first two divisions (e.g. 1A or 2A or 3A) has started, all boats from other divisions shall wait inside the waiting area. The waiting area windward boundary will be designated by red inflatable cylindrical training buoys. Boats may approach the starting line only after the starting signal of the previous divisions has been made and no individual or general recall has been signalled. If an individual recall has been signalled, boats may approach the line only after the X flag has been removed. Boats that have finished shall return directly to the waiting area or ashore, keeping well clear of all boats racing and of all boats whose warning signal has been made.

12.5 A boat starting later than 4 minutes after her starting signal will be scored Did Not Start (DNS). This changes rules A4 and A5.

13. SPARE

14. THE FINISH

The finishing line will be between the staff displaying orange flag (Categories A-B) and yellow flag (Category C) on the finishing boat and a red cylindrical inflatable buoy.

15. PENALTY SYSTEM

15.1 A boat that has taken a penalty or retired according to rule 44.1 shall complete an acknowledgement form at the Race Office within the protest time limit.

15.2 The penalty for breaches of Class Rules, Sailing Instructions 4.2, 5.1, 6.1(b), 12.4, 15.1, 19, 20, 21, 23 and 25 may be less than disqualification if the jury so decides.

15.3 Appendix P will apply.

15.4 In addition to taking action in accordance with Appendix P, if a member of the jury sees a boat breaking a rule they may make a sound signal but her sail number will not be hailed. If the appropriate penalty is not taken the Jury may protest one or more boats.

15.5 The scoring abbreviation for a discretionary penalty imposed under instruction 15.2 will be DPI.

16. TIME LIMITS AND TARGET TIMES

16.1 Time limits and target times (in minutes) are as follows:

Time limit	Mark 1 time limit	Target time
90	30	50

16.2 If no boat has passed Mark 1 within the Mark 1 time limit the race will be abandoned. Failure to meet the target time will not be grounds for redress. This changes rule 62.1(a).

16.3 Boats failing to finish within 20 minutes after the first boat sails the course and finishes will be scored Did Not Finish (DNF). This changes rules 35, A4 and A5.

17. PROTESTS AND REQUESTS FOR REDRESS

17.1 Immediately after finishing, a boat that intends to lodge a protest will inform the Race Committee boat at the finishing line about the boat/boats she intends to protest until her intention is recognised by the Protest Committee. (Addition to RRS rule 61.1a).

17.2 Protest forms are available at the Race Office. Protests and requests for redress or reopening shall be delivered there within the protest time limit.

17.3 The protest time limit is 60 minutes after the last boat has finished the last race of the day, or the race committee signals no more racing today, whichever is later.

17.4 Notices will be posted no later than 30 minutes after the protest time limit to inform competitors of hearings in which they are parties or named as witnesses. Hearings will be held in the Jury Room located in the Beach Area (See attachment 1). No protest hearing will be started after 2200.

17.5 Notices of protests by the Race Committee or Jury will be posted in the official notice board to inform competitors according to rule 61.1(b).

17.6 A list of boats that, under instruction 15.3, have been penalised for breaking rule 42 will be posted on the official notice board.

17.7 For the purpose of measurement rule protests (rule 64.3 (b)) the 'authority responsible' is the Measurer appointed by the Organising Authority.

17.8 Breaches of instructions 4.2, 5.1, 6.1(b), 12.4, 15.1, 19, 20, 21, 23 and 25 will not be grounds for a protest by a boat. This changes rule 60.1(a).

17.9 On the last scheduled day of racing a request for reopening a hearing shall be delivered (the following changes rule 66):

(a) within the protest time limit if the requesting party was informed of the decision on the previous day;

(b) no later than 30 minutes after the requesting party was informed of the decision on that day.

17.10 On the last scheduled day of racing a request for redress based on a jury decision shall be delivered no later than 30 minutes after the decision was posted. This changes rule 62.2.

18. SCORING

18.1 Race scores:

(a) Each race of two divisions will be scored as one race in which all competitors of those two divisions have entered. Allocation of points according to RRS A4.2 will consider that "the number of competitors entered in the series" is the maximum number of competitors after grouping the two largest divisions.

(b) For overall scoring purposes, a race will be defined as ONE COMPLETED RACE FOR ALL 6 DIVISIONS in the sequential numbering of races in Attachment 3. (Example: Race 3 is not completed until all 3A, 3B and 3C have been completed.) Therefore only races which have been completed for all 6 divisions will count towards the overall scoring.

18.2 Series scores:

(a) 3 races are required to be completed to constitute a series.

(b) When fewer than 6 races have been completed, a boat's series score will be the total of her race scores.

(c) When 6 or more races have been completed, a boat's series score will be the total of her race scores excluding her worst score.

18.3 To request correction of an alleged error in posted races or series results, a boat shall complete a scoring enquiry form available at the Race Office.

18.4 Ties in the OEC Series

(a) If there is a series score tie between two or more boats, each boat's regatta scores (ie. E1, E2, E3 etc) shall be listed in order of best to worst, and at the first point(s) where there is a difference, the tie shall be broken in favour of the boat(s) with the best (i.e. highest) score.

(b) If a tie remains between two or more skippers, they shall be ranked in order of their regatta score in the last regatta. Any remaining ties shall be broken by using the tied skippers' scores in the next-to-last regatta and so on.

18.5 For category C:

(a) Two races are required to be completed to constitute a regatta.

(b) When fewer than 5 races have been completed, a boat's regatta score will be the total of her race score.

(c) When from, 5 to 9 races have been completed, a boat's regatta score will be the total of her race score excluding her worst score.

19. SAFETY REGULATIONS

19.1 A boat that retires from a race shall notify the Race Committee as soon as possible and shall also fill in the relevant form available at the Race Office.

19.2 Each day of competition, before flag D is displayed, the Coaches or Team Leaders shall notify the Race Office of the boats not intending to race that day.

19.3 When code flag B is displayed ashore each Coach or Team Leader shall sign the checklist within 45 minutes after the flag has been displayed, to indicate that all team members have returned to shore. Flag B will be displayed not before than the last boat has finished the last race of the day or the race is abandoned.

19.4 Competitors who require assistance should blow a whistle or wave the paddle or one arm. The Race Committee reserves the right to assist competitors who in its opinion require assistance, regardless of the wishes of the competitor. This will not be grounds for redress. This changes rule 62.1(a).

19.5 All boats shall only return to their assigned places in Real Club Náutico de Vigo. All competitors shall carefully observe this sailing instruction. Otherwise they can be requested to pay the expenses of search and rescue operations.

19.6 The boats, when leaving and arriving at the port, must respect a buoys located approximately 80 metres east of the Dukes of Alba (Attachment 6). To exit the mark will be leave always to port and to enter will be leave always to starboard. Failure to comply with this rule will imply a penalty of 10 points in the day's races or other sanction to consider the Protest Committee.

20. REPLACEMENT OF EQUIPMENT

20.1 Substitution of damaged or lost equipment will not be allowed unless approved in writing by the Race Committee. Requests for substitution shall be made to the Race Committee at the first reasonable opportunity.

20.2 Substitution of damaged equipment may be permitted providing that the relevant form has been filled in at the Race Office, the damaged equipment has been checked by the Race Committee and the substituting equipment has been inspected.

20.3 If the substitution was made on the water between races, both the damaged and the substituting pieces of equipment shall be presented to the Race Committee after the end of the day's racing. In this case, the substitution is subject to the approval of the Race Committee given retrospectively.

21. EQUIPMENT AND MEASUREMENT CHECKS

21.1 A boat or equipment may be inspected at any time for compliance with the Class Rules, the NoR and the SI. If a boat is required by inspection after finish a race, no adjustments shall be made on the boat before the measurement inspection.

22. OFFICIAL AND ACCREDITED BOATS

22.1 Official boats will be marked as follows:

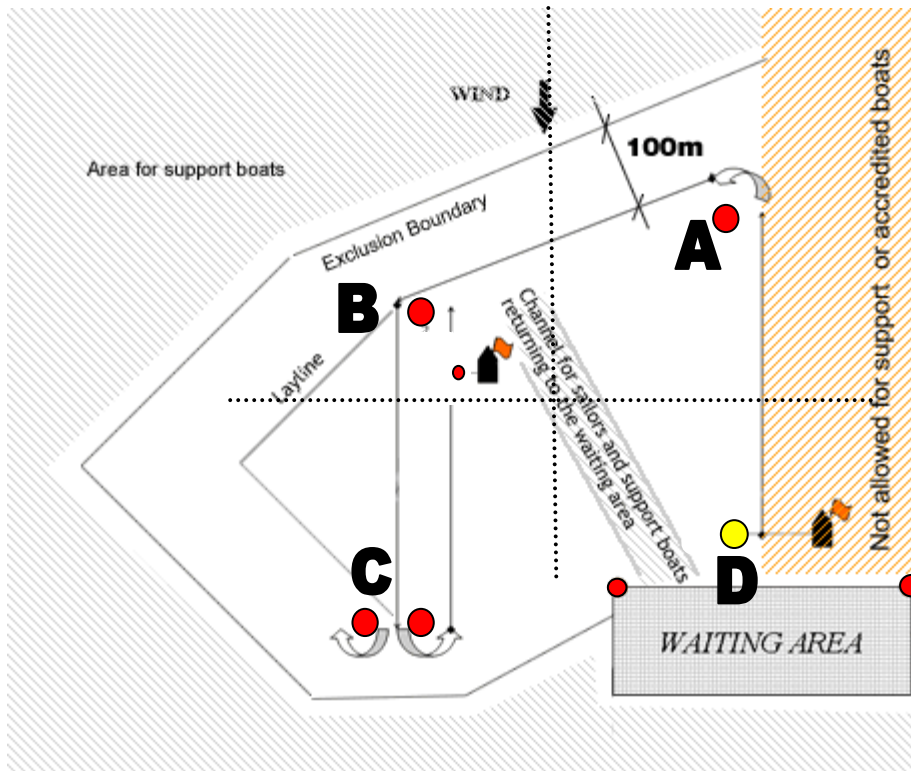
Categories	A-B	C
Race Committee signals boat	Orange flag marked with black "RC"	Yellow flag
All other Race Committee boats	Orange flag	
Jury Boat	White flag marked with black 'J'	
Rescue Boat	Pescanova logo	
Support and Coaches boats	A sticker (Race Office)	

22.2 Accredited boats will be marked as follows:

Press, spectators and VIP boats	White flag marked with black "Media"
---------------------------------	--------------------------------------

23. SUPPORT BOATS

23.1 Unless the SI 23.3 applies, Team Leaders, Coaches and other support personnel shall stay outside areas where boats are racing from the time of the warning signal for a division's race until all boats in all divisions have finished or the Race Committee signals a postponement, general recall or abandonment. To observe the race, support boats will be able to move from leeward to windward through the port side of the course keeping well clear of the exclusion boundary, approximately 100 metres outside of the course area. Support boats may also go to the finishing line from the waiting area through the centre channel. (See Chart below). Race Committee vessels may indicate a support boat to move further from the course area, in which case the mentioned boat shall do so immediately.



23.2 The penalty for failing to comply with the instruction 23.1 may result in the disqualification (from the race/s in which the infringement took place) of all boats associated with the infringing boat or other penalty at the discretion of the Jury.

23.3 When the Red Cross emblem (a red cross on white background) is displayed on the Race Committee signal boat, coaches and other team support boats shall collaborate with the organising committee in rescue assistance. For this purpose each coach is assigned at one of the area according to the diagram of the instruction 23.1 for rescue operations. The list of assignment of the coaches to the different areas is posted on the Official Notice Board.

24. BEHAVIOUR

Team members and officials shall observe the regulations of the host club and the house rules of the hotel and shall behave correctly at all times. Bad behaviour at any time, whether on shore or afloat, with or without any damage to the facilities, may be investigated by the Jury, who may call a hearing and impose a scoring penalty when appropriate.

25. TRASH DISPOSAL

Boats shall not put trash in the water. Trash may be placed aboard support and Race Committee boats.

26. BERTHING

Boats shall be kept in their assigned places in the boat park. The Protest Committee will take action if this rule is violated.

27. PRIZES

27.1 Prizes will be awarded to the top finishers.

28. DISCLAIMER OF LIABILITY

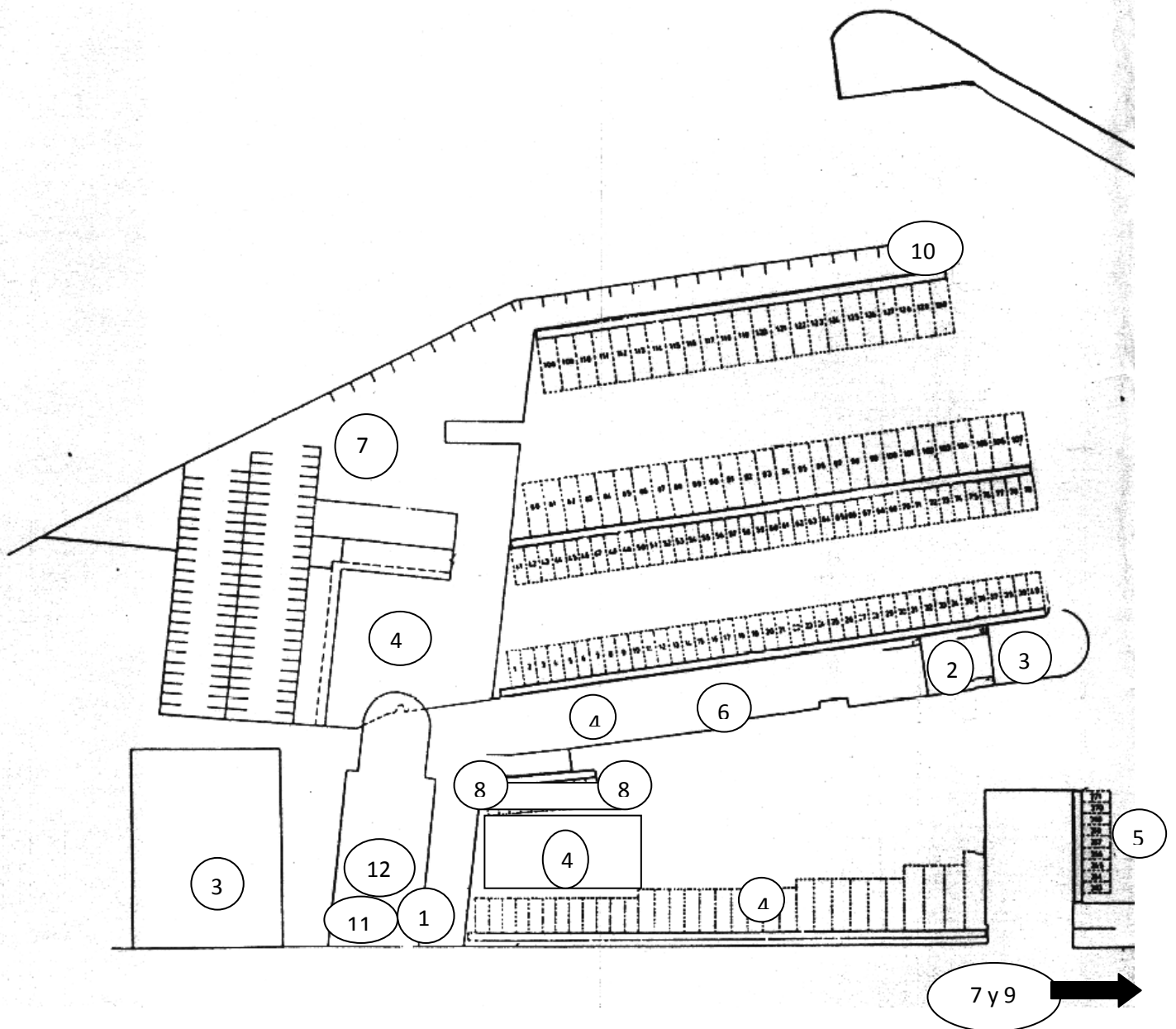
28.1 Competitors participate in the regatta entirely at their own risk and responsibility. See rule 4, Decision to Race.

28.2 The Organising Authority and any other party involved in the organization of the Championship will accept no liability whatsoever for any injury, damage, loss or claim, whether personal or material, incurred by or inflicted to participants before, during or after the Championship.

28.3 All competitors and support staff will be required to execute liability waiver.

29. INSURANCE

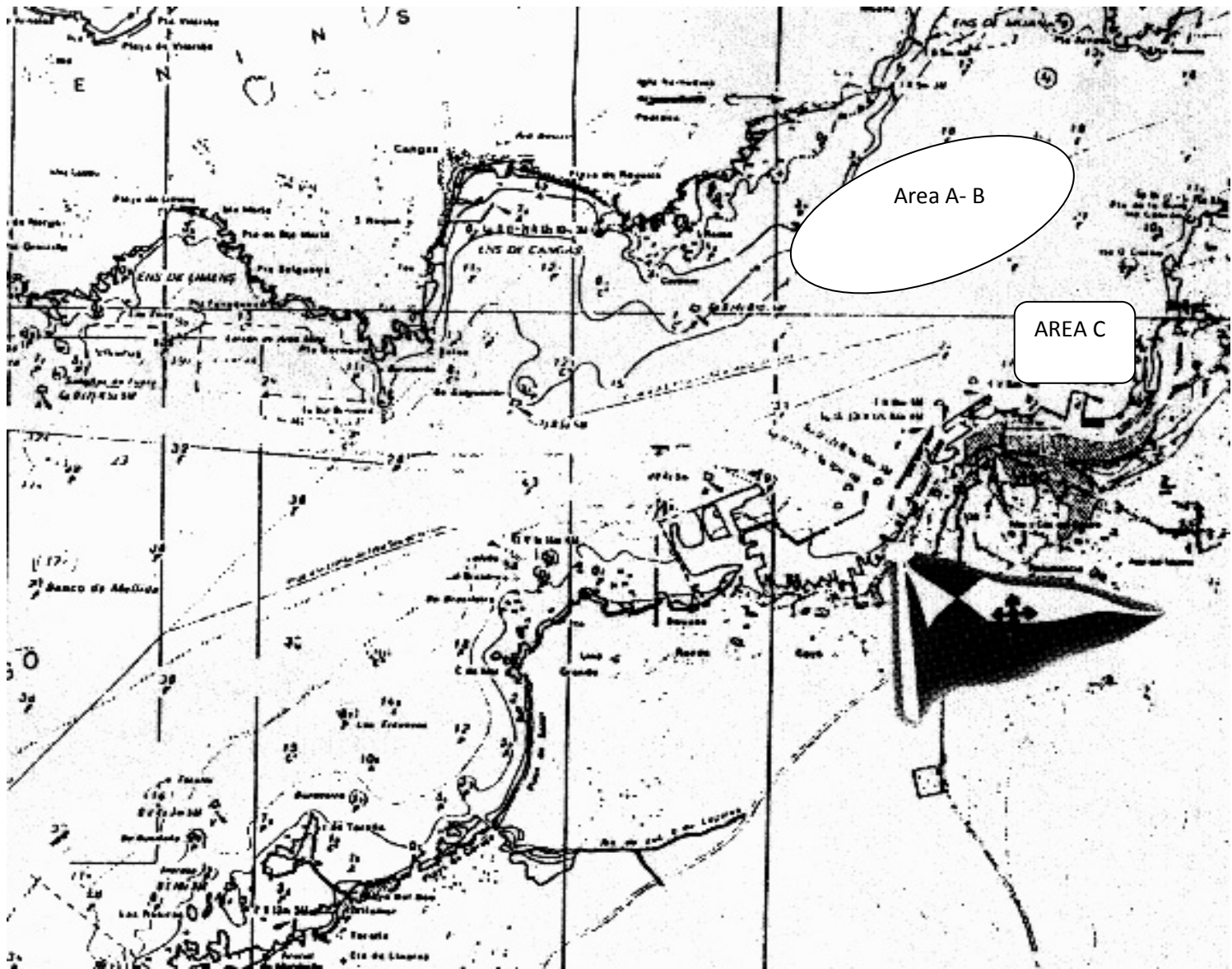
29.1 Each participant should be insured with valid third-party liability insurance with a minimum cover of Euros 300.000.



1- Oficina de regatas // Race office
 2- Mástil de señales// Main flag pool
 3- W.C. Duchas//Showers
 4- Zona Varada /landing area
 5- Pantalán neumáticas// -Rib's dock
 6- Grúa neumáticas// Elevator Rib's

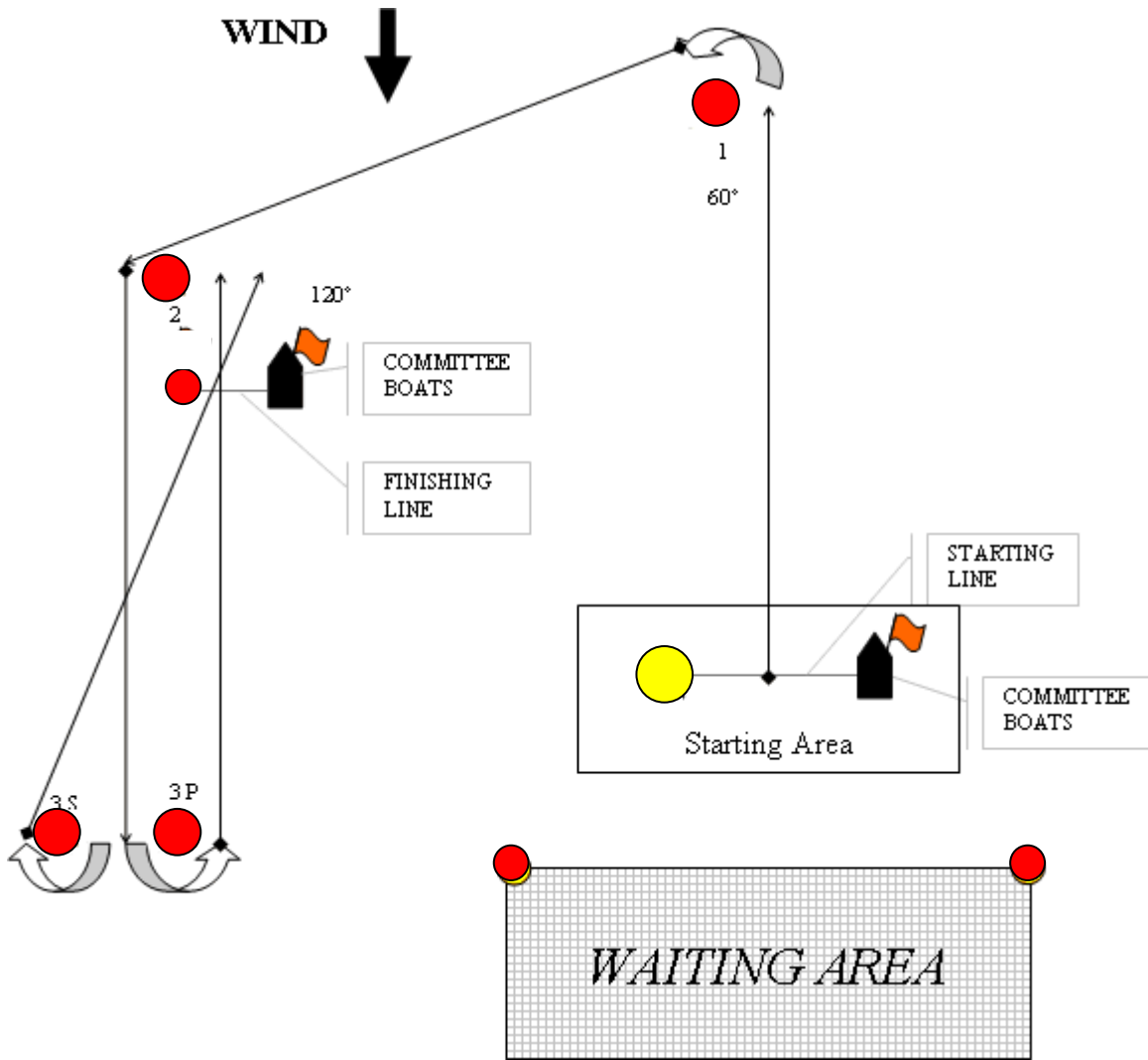
7- Remolques//Trolleys
 8- Rampa// Launching
 9- Aparcamiento// Parking
 10- Gasolinera//Gas station
 11- Comité de Protestas // Protest Committee
 12- Dinner (ground floor) . Prize Ceremony (1rst. floor)

ATTACHMENT 2: RACING AREA

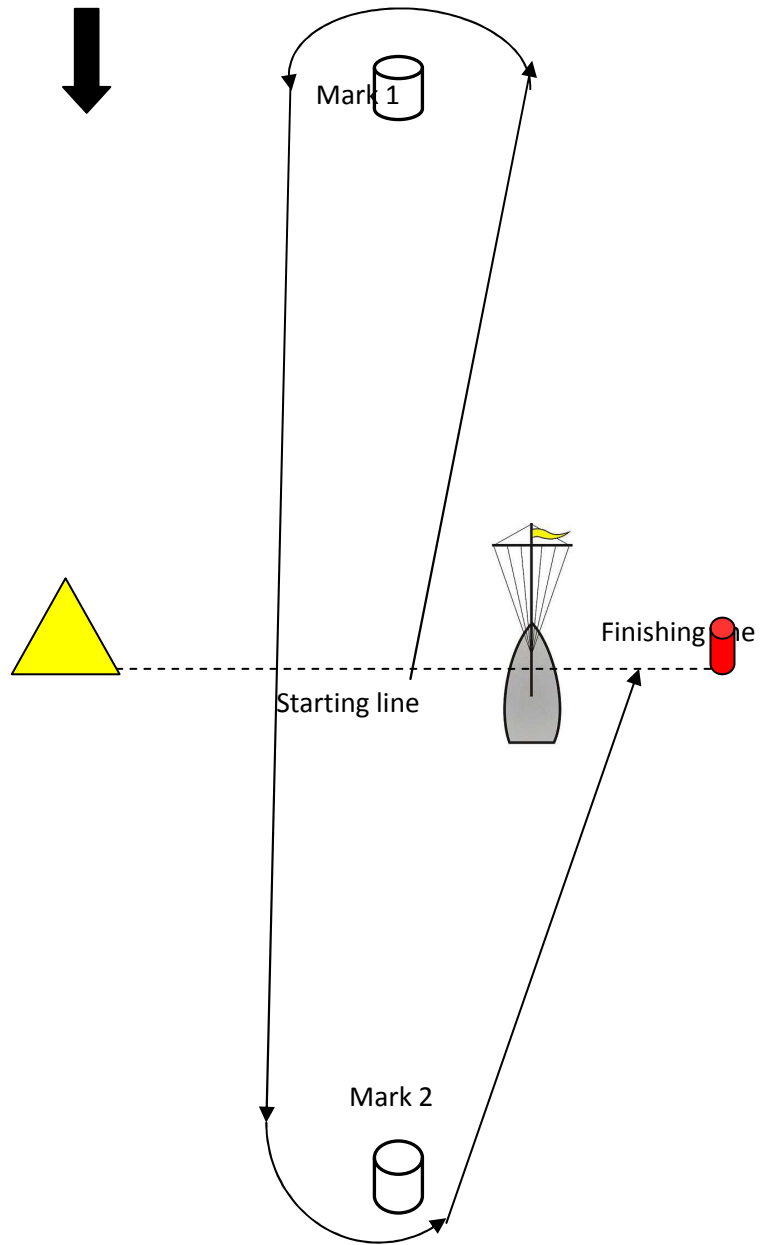


ATTACHMENT 3: THE COURSE A-B

Course configuration: Start – 1 – 2 – Gate (3S – 3P) – Finish.
Marks 1, 2 and 3P shall be left to port; mark 3S to starboard.
Angles are approximate.



Wind



MARKS:

Marks 1 and 2: White cylindrical inflatable buoys.

The starting mark: Yellow troncoconical inflatable.

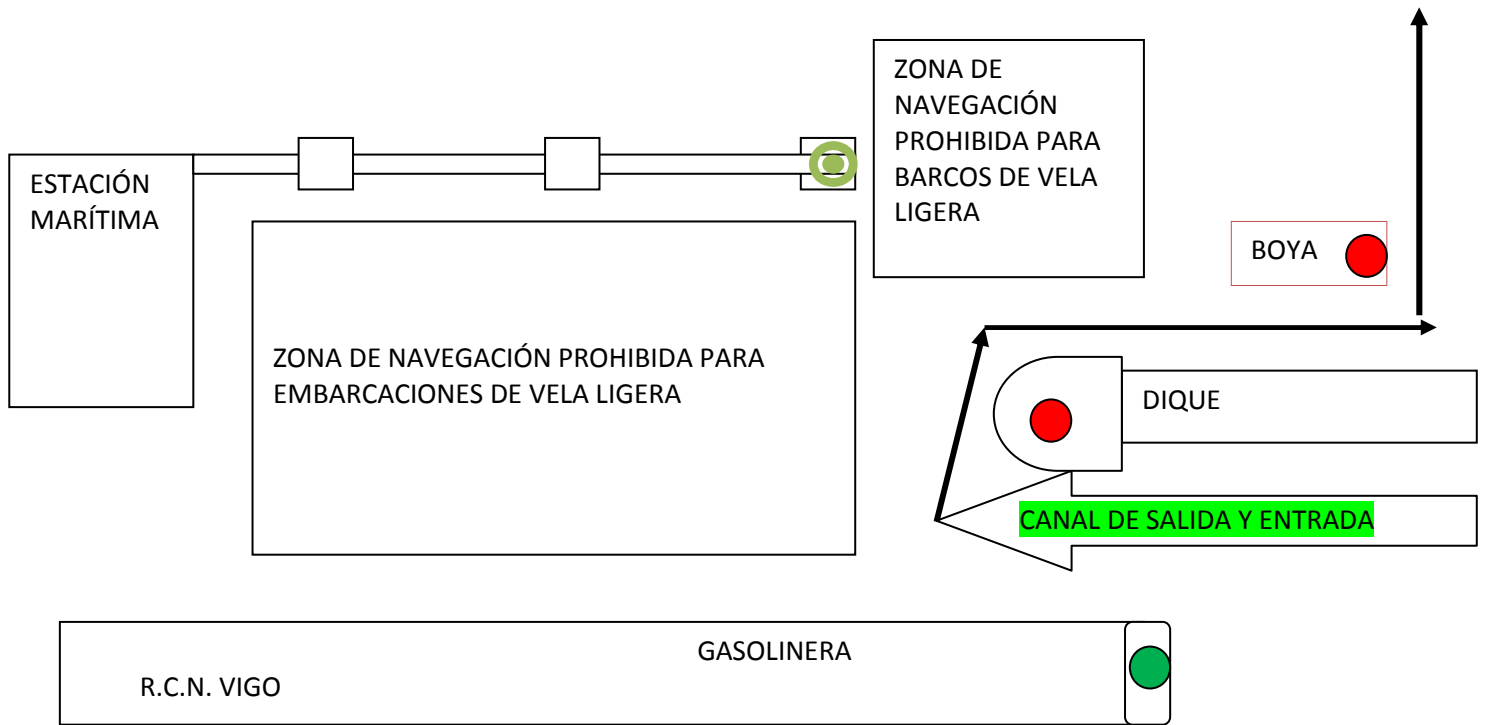
The finishing mark: Red cylindrical inflatable.

Marks 1 and 2 shall be left to port.

Attachment 5: The Starting Schedule

Date	Race	Division	Starting Signal
Day 1	REGISTRATION		
Day 2	1A	5 (white) & 6 (pink)	1100
	1B	3 (red) & 4 (yellow)	a.s.a.p
	1C	1 (blue) & 2 (green)	a.s.a.p
	2A	4 (yellow) & 6 (pink)	a.s.a.p
	2B	1 (blue) & 3 (red)	a.s.a.p
	2C	2 (green) & 5 (white)	a.s.a.p
	3A	1 (blue) & 4 (yellow)	a.s.a.p
	3B	2 (green) & 6 (pink)	a.s.a.p
	3C	3 (red) & 5 (white)	a.s.a.p
Day 3			
	4A	2 (green) & 4 (yellow)	1000
	4B	1 (blue) & 5 (white)	a.s.a.p
	4C	3 (red) & 6 (pink)	a.s.a.p
	5A	4 (yellow) & 5 (white)	a.s.a.p
	5B	1 (blue) & 6 (pink)	a.s.a.p
	5C	2 (green) & 3 (red)	a.s.a.p
	6A	5 (white) & 6 (pink)	a.s.a.p
	6B	3 (red) & 4 (yellow)	a.s.a.p
6C	1 (blue) & 2 (green)	a.s.a.p	
Day 4			
	7A	4 (yellow) & 6 (pink)	1000
	7B	1 (blue) & 3 (red)	a.s.a.p
	7C	2 (green) & 5 (white)	a.s.a.p
	8A	1 (blue) & 4 (yellow)	a.s.a.p
	8B	2 (green) & 6 (pink)	a.s.a.p
	8C	3 (red) & 5 (white)	a.s.a.p
	9A	2 (green) & 4 (yellow)	a.s.a.p
	9B	1 (blue) & 5 (white)	a.s.a.p
9C	3 (red) & 6 (pink)	a.s.a.p	

*a.s.a.p.:as soon as practical



Por orden de Capitanía Marítima se obliga a todas las embarcaciones de vela ligera a salir y entrar por la zona indicada en el plano. Pegados al dique todo lo que puedan durante casi 30 metros antes de poner rumbo a la boya y para entrar a la inversa.

Gracias a todos por vuestra colaboración.